

# ELMTON WITH CRESWELL PARISH MAGAZINE



Muslim and Christian communities in Boda (Central African Republic) play and watch football matches organised by *Tearfund* to foster social cohesion.  
*Photo by Andy Hall for the Observer.*

## February 2018

£1.00

# J. CLAY of Creswell

FUNERAL DIRECTORS EST. 1950

A Professional, Personal Service  
to the Bereaved

*New Private Chapel of Rest*



110 Elmton Road, Creswell  
Tel: 01909 721320



ELMTON  
with  
CRESWELL

**THE BISHOP OF DERBY**

Rt. Revd Dr Alastair Redfern  
The Bishop's House, 6 King Street,  
Duffield, Belper, DE56 4EU  
Tel. 01332 840132

**THE ARCHDEACON OF CHESTERFIELD**

The Revd. Canon Tony Kaunhoven  
Tony.kaunhoven@derby.anglican.org  
Tel. 01629 814462

**PARISH DIRECTORY**

**VICAR:** Revd. Liz Kirby (REST DAY: Thursday)  
The New Rectory, 31 High Street, Whitwell, S80 4RE  
Tel: 01909 722378 E.mail: liz.kirby@btinternet.com

**LAY READER:** Mrs Lynne Parker Tel: 01909 530994

**WARDEN**

ST. PETER'S ELMTON Mr Richard Shacklock — 01909 721235  
ST. MARY MAGDALENE'S Mr Dennis Smedley — 01909 721481  
CRESWELL:

**Deputy Warden** Mr Lewis Marriott — 01909 721564 - Creswell  
Mr Kevin Jones - Elmton

Parish Safeguarding Link(PSL): Mrs. Margaret Froggett –  
01909 723342

Church website address ecwst.com

Magazine Editor John Kirby : email: kirby486@btinternet.com

**BOOKINGS FOR WEDDINGS & BAPTISMS**



If you would like to book a Wedding or Baptism at either Elmton or Creswell church; please come along to: St. Mary Magdalene's Church, Creswell between 6 –7 pm on the 1st Thursday of the month: (Contact David Froggatt on 01909 723342)

**Baptisms take place on the 3<sup>rd</sup> Sunday  
of each month at 12.00 noon.**

Many people book baptisms well in advance and dates do get booked up particularly in the Summer months, so please don't arrange a Christening party before you have checked with us first.





## The Sign of the Cross – Ash Wednesday & St Valentine’s Day

Ash Wednesday falls on the 14<sup>th</sup> February 2018 which this year also happens to be St. Valentine’s day.

Ash Wednesday marks the beginning of Lent, the forty days we spend thinking about Jesus’ time in the wilderness after his baptism. We remember that Jesus was tempted but didn’t give in to that temptation and after his time in the desert he was ready to begin his ministry.

The time spent in the desert in silence and prayer with God gave Jesus the confidence to conduct his life and ministry in God’s way; and he was able to say ‘no’ to the temptation to do things the world’s way.

During church services on Ash Wednesday, many people will receive the sign of the cross, made in ash, on their foreheads and will wear that sign for the rest of the day.

We receive the sign of the cross, to remind us that we are sinners; we give in to sin quite often, unlike Jesus who did *not* give way to sin when he was tempted.

We use ash to make the sign of the cross, as a reminder that we will all die and return to dust and we are invited during Lent, to look closely at our lives and to ask God’s help to turn around the areas of our lives which need change.

But this year we also celebrate St. Valentine’s day on Ash Wednesday and perhaps that fits the theme very well.

St. Valentine’s day is about love; usually love between two people, but if we take a wider view of love, it was

because Jesus loved us so much that he was prepared to die on the cross.

And as we have the cross trace on our foreheads in ash, we remember not just that we are sinners but that even though we are sinners, Jesus loves us so much that he is prepared to give his life for us. Because he was prepared to give his life, Jesus has made it possible for our relationship with God to be restored and we have the promise that even though we will die, we will also be raised again to live in God's love.

May this Lent be a time of closeness to God and a time of experiencing Jesus' love and forgiveness, as we spend time looking at our lives with God.

May each of us experience the Holy Spirit working in us to move us gently back onto the right path, and may we all come to the joy of Easter Day with renewed hearts and lives.



With love and blessings  
Rev Liz



The new assistant in the Parish at work in the study.

# FROM THE REGISTERS FOR December and January.

**Baptisms:**      None

**Weddings**      Elmton 4<sup>th</sup> November – James Robinson and Bryony Warren.

**Funerals:**      **December** - Bryan Donald Betts, Robert Newton. Geoffrey Seston. **January** – Derick Austin Smith, Betty Newton, Jack Carl Machin.

## SUNDAY READINGS FOR FEBRUARY

### Sunday 4<sup>th</sup>

1<sup>st</sup> Reading:      Prov.      8.      1; 22 – 31.  
2<sup>nd</sup> Reading:      Col.      1.      15 - 20.  
Gospel Reading :      John.      1.      1 – 14.

### Sunday 11<sup>th</sup>

1<sup>st</sup> Reading:      2 Kings.      2.      1– 12  
2<sup>nd</sup> Reading:      2 Cor.      4.      3 – 6.  
Gospel Reading:      Mark.      9.      2 – 9.

### Sunday 18<sup>th</sup>

1<sup>st</sup> Reading:      Gen.      9.      8 – 17.  
2<sup>nd</sup> Reading:      1 Peter.      3.      18 – 22.  
Gospel Reading:      Mark.      1.      9 – 15.

### Sunday 25<sup>th</sup>

1<sup>st</sup> Reading:      Gen.      17.      1 – 7, 15 – 16.  
2<sup>nd</sup> Reading:      Rom.      4.      13 – end.  
Gospel Reading:      Mark.      8.      31 – end..



## SERVICES FOR JANUARY

### Sunday 4<sup>th</sup>

Holy Communion	: St. Lawrence Whitwell	8.30 am
Holy Communion	: St. Mary Magdalene Creswell	10.30 am
Eucharist	: St. Peter's Elmton -	6.00 pm

### Wednesday 7<sup>th</sup>

Holy Communion	: St. Lawrence Whitwell	9.30 am
----------------	-------------------------	---------

### Friday 9<sup>th</sup>

Silent Prayer at All Saints, Steetley		1.00pm
---------------------------------------	--	--------

### Sunday 11<sup>th</sup>

Holy Communion	: St. Lawrence Whitwell	8.30 am
Holy Communion	: St. Mary Magdalene Creswell	10.30 am
Eucharist	: St. Peter's Elmton -	6.00 pm

### Wednesday 14<sup>th</sup>

Holy Communion	: St. Mary Magdalene Creswell	9.30 am
----------------	-------------------------------	---------

### Sunday 18<sup>th</sup>

Holy Communion	: St. Mary Magdalene Creswell	8.30 am
Holy Communion:	St. Lawrence Whitwell	10.30 pm
Holy Communion	: All Saints Steetley	3.15 pm
Eucharist	: St. Peter's Elmton -	6.00 pm

### Wednesday 21<sup>st</sup>

Holy Communion	: St. Lawrence Whitwell	9.30 am
----------------	-------------------------	---------

### Sunday 28<sup>th</sup>

Holy Communion	: St. Lawrence Whitwell	8.30 am
Holy Communion	: St. Mary Magdalene Creswell	10.30 am
Eucharist	: St. Peter's Elmton -	6.00 pm

### Wednesday 28<sup>th</sup>

Holy Communion	: St. Mary Magdalene Creswell	9.30 am
----------------	-------------------------------	---------



## St Mary Magdalene 200 Club

This Month the 200 Club Celebrates TWENTY Years and it is still profitable. The Weekly cash prizes is First Prize £30, .The Second Prize is £20.The Third Prize has remained at £10,(Still maintaining £60 weekly Prize money) the Two Special Cash Draws At Christmas and the Annual Garden Fete will remain.(2 x £175) £350.00

We still have free numbers – don't miss out

Thank you Supporting your Church over the past year it is a beautiful building and your contribution does help to keep it maintained, It costs in Excess of £3.000 a month to maintain the Church this is raised by the various activities we Run, Please come and Join us

Please contact one of our collectors for Information on Joining

Michele Ellis, Pauline Orwin, Helle Woodcock Marlene Frost

Dennis Smedley, Janet Staniforth, Maureen Deakin  
And of course Lewis.

Everyone is Welcome Why not join up this Christmas.

We wish all our members a very happy Christmas and New Year.

On Behalf of the P.C.C. - Lewis



# CRESWELL SUNDAY SCHOOL

The first Sunday of every month

at 10.30am in CRESWELL CHURCH

(3<sup>rd</sup> Sunday Family Service in Church)



**Why not come and join us as we learn about the Christian Faith through stories, games and crafts.**

**For more information contact Margaret Froggatt  
01909 723342**

---



"Looks like they've introduced contactless payments for their collections."

## EVENTS IN FEBRUARY

**February 13<sup>th</sup>** – Pancake Lunch Whitwell  
Community Centre. Contact Cynthia Rollinson for tickets.

**February 24<sup>th</sup>** – Shrove Tide Social at 6.30pm in  
the Church Hall. Tickets £5.00 (£2.50 for Children)  
Buffet, Tea and Coffee.  
Bingo, Quiz and Raffle.

### TOTS AND TOAST



*For parents and pre- school children.*

*Tea, coffee and toast and a play area with toys  
for the children.*

*9.30 am – 11.00am every alternate Friday February 2nd*

.....

---

## CRESWELL BREAKFAST CLUB

*Monday, Wednesday and Friday during half-  
term week. (19<sup>th</sup> 21<sup>st</sup> and 23<sup>rd</sup> February)*

---

### THANK YOU



*Thank to Village Estates in  
Clowne for the gift of  
provisions for Tots and Toast.*



## LOCAL HISTORY CORNER



### CRESWELL 1940s

#### MORE OF JACK'S MEMORIES. (Jack Thompson )

Cubs, Scouts and Senior Scouts were thriving in the old, wooden church rooms. Mary Cocking was the Akela, Rev. Stanley Branson ran the Scouts and his sisters ran the Guides and Brownies. Scouts were held in the Senior School Hall- British Bulldog most weeks! Geoff Saul was my patrol leader and Graham Taft the troop top scout. I was always sad that we wore a boring navy blue neckerchief whilst other troops had scarves in red, white and yellow etc.

Wide games were often held in the Craggs or even the Gripps. At one event we had Rev. Branson upside down hanging from the tree just above the quarry in the Craggs. In the back of the Church Rooms was a billiard table, the cloth in a terrible state but it gave us some great games. Most of the girls of our age were in the Guides- Averil and June Willison from the farm, Jane Baker from the paper shop, Dorothy Cocking, Janet Fretwell, Jean Lewis, Margaret Ford, Margaret Evans the doctor's daughter and Jennifer Wass to name a few.

On the bottom road (Mansfield Road) was the home of the Roberts. Mr. Roberts was a dairyman and his two sons Geoffrey and Peter were both Scouts and in the church choir. I can remember the old gentleman who was the the Crucifer and always led the choir in a processional hymn. (This was Mr. Bennett who kept a green grocery shop opposite the top Co-op). He had the wonderful skill of finally putting his cross to rest, in its rack, just as the clergy and choir had reached their seats and the organist was playing the Amen. At this time the organ needed hand pumping; a small whistle, controlled by the organist, signalled to the pumper to give more wind.

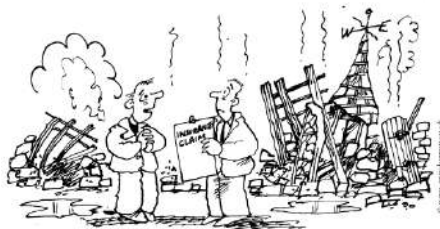
I can remember the shops on Elmton Road opposite the Senior School- Parkes barbers, Pickering sweets, Wycherley chemist, Binge the postmaster, National Provincial Bank, Phyllis Parkes sweet shop, Woodhead grocers, Garfitt's gents-outfitter

and the Billiard Hall. The best ice cream in the village was made by Mrs. Harper in the shop opposite the "bottom Model". Creswell had two Co-ops, one on Mansfield Road and one by the Model Village. I can remember the Model having a small railway line through the middle to allow delivery of coal by horse and tub to the homes of the miners.

A treat for me was to go to tea with Mr. and Mrs. Stubbings at the top of Elmton Road and there I was allowed to play with tin plate boats which floated on the garden pond. The top of the village was called Chinatown but I don't know why. Great shock and sadness during the Sheffield blitz! I was playing with my Meccano and steam engine when one Saturday evening a bomb dropped in one of Tommy Moore's fields which produced a very large bang. It was said that following an air raid on Sheffield the bombers had released their last few bombs over us. I remember amateur dramatics in the Drill Hall under the direction of George Green. I have a treasured photo of Dorothy Cocking, some of her family and myself, dressed as Hussars in "Goodnight Vienna". Others in it, Arthur Noble, Arthur Plant, Dennis Smedley- more names! I remember Mr. Russell from Worksop did the lights and microphone. His son Peter was a wonderful aero-modeller who came to Creswell to demonstrate a jet powered model for us. What wonderful memories I have of life in Creswell!

## Elmton *with* Creswell LOCAL HISTORY GROUP

---



*...er... apart from this little hiccup... it was an excellent church pancake supper...*

# Sudoku

solution on page 16

		5			7	3		
	1					2		
7				1	5			6
	5	9			6			
			3			4	2	
6			5	4				7
		1					8	
		8	2			6		

© 2008 KrazyDad.com

## Crossword Clues

### Across

- 1 'If you love those who love you, what — is that to you?' (Luke 6:32) (6)
- 4 'They threw the ship's — overboard' (Acts 27:19) (6)
- 7 The first murderer (Genesis 4:8) (4)
- 8 He was the head Levite in charge of the singing when the ark of God was brought back to Jerusalem (1 Chronicles 15:22) (8)
- 9 Samson was noted for this (Judges 16:6) (8)
- 13 Solicit money or food from passers by (Acts 3:2) (3)
- 16 What William Booth's Christian Mission became in 1878 (9,4)
- 17 Alliance of Religions and Conservation (1,1,1)
- 19 'I will praise your name for ever and ever. — — I will praise you' (Psalm 145:1-2) (5,3)
- 24 Simon had (anag.) (8)
- 25 Desperate (Deuteronomy 28:48) (4)
- 26 Elisha witnessed the boy he was seeking to resuscitate do this seven times before opening his eyes (2 Kings 4:35) (6)
- 27 The belly and thighs of the statue in Nebuchadnezzar's dream were made of this (Daniel 2:32) (6)

### Down

- 1 'Before the — crows, you will disown me three times' (Matthew 26:75) (4)
- 2 Relating to the books of the Bible between Acts and Revelation (9)
- 3 'They have — the Lord out of the tomb, and we don't know where they have put him!' (John 20:2) (5)
- 4 Belief (5)
- 5 'Take the following fine spices: ... 250 shekels of fragrant — ' (Exodus 30:23) (4)
- 6 'Do not — Jerusalem, but wait for the gift' (Acts 1:4) (5)
- 10 A seer (anag.) (5)
- 11 'Even there your hand will — me' (Psalm 139:10) (5)
- 12 The wild variety was part of John the Baptist's diet (Mark 1:6) (5)
- 13 A non-Greek speaker who was looked down on by civilized people (Colossians 3:11) (9)
- 14 Famous 1950s musical whose characters included members of  
16 Across, — and Dolls (4)
- 15 The province from which Paul wrote to the Corinthians (1 Corinthians 16:19) (4)
- 18 'He was standing in the gateway with a linen cord and a measuring — — his hand' (Ezekiel 40:3) (3,2)
- 20 'Today, if you hear his — , do not harden your hearts as you did in the rebellion' (Hebrews 3:15) (5)
- 21 The Jericho prostitute who hid two Israelite spies on the roof of her house (Hebrews 11:31) (5)
- 22 'And now these three remain: faith, — and love. But the greatest of these is love' (1 Corinthians 13:13) (4)
- 23 'God has numbered the days of your reign and brought it to an end' (Daniel 5:26) (4)

*Crossword answers page:16.*

1		2			3		4		5		6	
7					8							
	9			10		11		12		13		14
15												
16												
17	18			19	20		21					
			22									23
24									25			
26							27					

C	R	E	D	I	T		T	A	C	K	L	E	
O		P			A		E		A		E		
C	A	I	N			K	E	N	A	N	I	A	H
K		S			E		E		E		V		
	S	T	R	E	N	G	T	H		B	E	G	
A		O		R		U		O		A		U	
S	A	L	V	A	T	I	O	N	A	R	M	Y	
I		I		S		D		E		B		S	
A		R	C		E	V	E	R	Y	D	A	Y	
	O		H		O		E			R		M	
A		D	M	O	N	I	S	H		D	I	R	E
	I		P		C		A			A		N	
S	N	E	E	Z	E		B	R	O	N	Z	E	

4	8	5	6	2	7	3	9	1
9	1	6	8	3	4	2	7	5
7	2	3	9	1	5	8	4	6
2	5	9	4	8	6	7	1	3
8	3	4	1	7	2	5	6	9
1	6	7	3	5	9	4	2	8
6	9	2	5	4	8	1	3	7
5	4	1	7	6	3	9	8	2
3	7	8	2	9	1	6	5	4



THE ARCHDEACON HAD NO IDEA WHERE COLIN'S NEW CURATE CAME FROM



## **Recipe of the Month**



### **Whole Eggs in Coconut Masala**



#### **Ingredients**

- 3 tbsp vegetable oil
- 6 free-range eggs, hard-boiled, peeled and left whole
- 1 tsp ground turmeric
- 1 tsp Kashmiri chilli powder
- 400ml/14fl oz coconut milk
- 2 medium red onions, very thinly sliced
- 4cm/1½in fresh root ginger, finely shredded
- 3 fresh green chillies, thinly sliced, with seeds
- ½ tsp salt
- 1 tsp sugar
- handful of coriander leaves, chopped
- ½ tsp garam masala

#### **To Serve**

Boiled Basmati Rice

#### **Method**

1. Heat the oil in a heavy-based saucepan or karahi over a medium heat, add the whole eggs and fry for 1–2 minutes, or until lightly coloured, then add the turmeric and chilli powder and cook for another 30 seconds. Stir in the coconut milk and bring to a simmer.
2. Add the onions, ginger, chillies and salt, and simmer for five minutes, or until the coconut milk has reduced in volume by half and the onions are just softened, adding a splash of water if it becomes too thick. Stir in the sugar and coriander and sprinkle with garam masala. Halve the eggs, and serve with rice.  
BBC food.

## Events from the past that occurred during the month of February.

- 2<sup>nd</sup> Classic western "Stagecoach" starring John Wayne released 1939
- 3<sup>rd</sup> Tycoon Robert Maxwell fails to buy Man Utd for £10m 1984
- 4<sup>th</sup> Norman wisdom British comedy actor/singer born 1920
- 5<sup>th</sup> Sweet rationing ends in Britain 1953
- 7<sup>th</sup> British railways nationalised 1940
- 9<sup>th</sup> The Queens sister Princess Margaret dies aged 71 2002
- 12<sup>th</sup> Toddler James Bulger abducted & murdered in Liverpool 1983
- 14<sup>th</sup> Vicar John Suddards murdered in his vicarage in Thornbury Glos 2012
- 16<sup>th</sup> The musical" Carousel " released by 20th century fox 1956
- 17<sup>th</sup> Twins Maria & Angela Eagle (both Labour MPs) born 1961
- 18<sup>th</sup> After refurbishment and £15.5M " The Crucible " Sheffield reopens 2010
- 19<sup>th</sup> Eastenders premiers on BBC one 1985
- 20<sup>th</sup> 405 miners die in Germanys worst coal mining disaster Bergkamen 1946
- 22<sup>nd</sup> Joseph Earnest Hogg aged 14 crushed by tubs Creswell Colliery 1911
- 23<sup>rd</sup> England 1 Germany 0 in friendly at Wembley 1966
- 24<sup>th</sup> Westminster abbey designated 1958
- 25<sup>th</sup> Zeppo youngest of the Marx brothers born 1901
- 28<sup>th</sup> General election held in UK with Labour party victorious 1974
- 29<sup>th</sup> BBC Radio3 ceases broadcasting on medium wave (AM) 1996

*Sent in by Kevin Jones..*

## Provisions of Pastoral Reorganisation – Draft Scheme

Union of benefices and alteration of parish names

- 1) The benefice of Elmton and the benefice of Whitwell in the diocese of Derby shall be united to create a new benefice which shall be named ‘‘ The Benefice of Elmton with Creswell and Whitwell with Steetley’’ and the area of the new benefice shall comprise the parish of Elmton (the name of which shall be altered to ‘‘The Parish of Elmton with Creswell’’) and the parish of Whitwell (the name of which shall be altered to ‘‘The Parish of Whitwell with Steetley’’), which parishes shall continue distinct.
  
- 3) If immediately before this Scheme comes into operation the Reverend Elizabeth Kirby holds an ecclesiastical office in either of the benefices referred to in clause 1 hereof she shall be the first incumbent of the new benefice.

Please read the full scheme details of the Blue form on the Church Notice boards . Send any comments by letter to the address shown on the Blue Form by 13<sup>th</sup> February 2018.

---

COLOURING IN PAGE



Rebekah was a beautiful maiden. She was chosen to be the wife of Isaac.

ELMTON  
SCHOOL ROOMS  
FOR HIRE



£6.00 per hour  
(a nominal charge for heating  
may be made in winter)  
Contact: Richard

CRESWELL  
CHURCH HALL  
FOR HIRE



£8.00 per hour  
Contact:  
01909 724442



**Independent  
Testing  
Company**

26 Elmton Road  
Creswell  
Worksop  
Notts. S80 4ES

Tel. 01909 723 931

**ELECTRICAL CONTRACTORS  
TEST & INSPECTION ENGINEERS  
PORTABLE APPLIANCE TESTING  
ELECTRICAL SAFETY CONSULTANTS  
FIRE ALARM & INTRUDER ALARM  
SERVICING**

**TEL: 01909 723931**



**CRESWELL  
FISH BAR**



"  
Proprietor: Andrew Sergiou

**Kebabs a speciality**

70 Elmton Road, Creswell  
Tel: 01909 721356

To advertise in our Magazine  
please contact John Kirby on:-

01909 722378 or  
[kirby486@btinternet.com](mailto:kirby486@btinternet.com).

Cost per year are:

Full page £100.00  
½ page £ 50.00  
¼ page £ 25.00  
1/6 size £ 17.00

**102 Elmton Road**

**Creswell**

**Workshop**

**Nott's**

**S80 4BT**

**Tel. 01909 723973**

**Proprietor: Mrs Rita Turner**

**TURNER'S**



*A family run business*

We offer a good range of Household  
Cleaning Product's, Garden Compost  
D.I.Y Equipment, Pet Food & Bedding

**We also deliver free of charge to over 60's in Creswell:  
delivery to surrounding areas will be charged at a rate  
to be arranged**

## LIMESTONE HOUSE COMMUNITY AND VISITOR CENTRE

**Open: Monday to Friday from 9am to 4.30pm and Saturday 9am to 12noon**

- **Memory Lane Café** food and refreshments at reasonable prices
- **Heritage Centre:** Mining Display by the Elmton with Creswell Local History Group and the War Years
- **2 Community Computers** with internet
- **‘Making Ends Meet/ Get your Finances in Shape’-** we can direct you to someone who can give you support
- **Intergenerational Training in basic IT /on line communications** funded by Big Local. Anyone ‘over School leaving age’ can join this training course. There is no upper age limit for this course which is on Wednesdays from 3.30p.m to 6p.m: Book in now.
- **Advisory services** every Thursday 1pm to 3.30pm in Room 6,
- **Recycling in Charity shops** (upstairs and downstairs at Limestone House)
- **Training through Volunteering or Work experience** in Retail, Office Admin and Cafe.
- **Music Club on Mondays:** music presentations 10.30 to 12 noon (Room 7/8) & **Coaching Brass Instrument players/ Drums** on Sundays 10.30 a.m to 1 p.m. **Some Brass Instruments are now available if you wish to learn (cornets, tenor horn and trombone)**
- **Luncheon Clubs on Mondays and Fridays** from 12.15p.m. Transport available.
- **Genealogy Club:** Thursday mornings 10a.m to 12noon... Research your Family Tree
- **Job Club: “Drop in”:** every Tuesday 1.30 to 3.00 p.m
- **Room Hire ideal for Breakfast meetings at £8 an hour.** Evenings Room hire is also available. Contact us to book a room
- **Connect Creswell:** Crafts and various activities, (Book in at Limestone House)
- **Fundraising activities:** 100+ Club, Raffles. Concerts with light refreshments: **Tea time Brass Band ‘Proms’ concert on Sunday, 30/10/16 in the Creswell Social Centre**
- **Book a Lunch for your Group:** One week’s notice required.
- **Christmas dinner for your Group:** book as soon as possible

[www.limestonehousecreswell.com/](http://www.limestonehousecreswell.com/) We are on Facebook/ We do have a lift

**Elmton and Creswell Village Company, Charity number: 1128286**

**E mail: creswell\_res\_point@yahoo.co.uk**

**BEECROFT  
MEMORIALS**

Sculptors Stone Mason

*Quality Carving Of All Stone,  
Marble & Granite*  
Inscriptions & renovations

**SHOWROOM**

**6A Elmton Road, Creswell**

**Mon—Fri 9.30am—5pm**

**Sat 9 am—12.30pm**

**Tel. 01909 723780**

**Mob. 07970 460193**

**Fax 01909 726602**

St Peters Church Elmton



Service times:

6.00pm every Sunday except when  
there is a 5<sup>th</sup> Sunday of month.

# ***AF SERVICING***

**Mansfield Road, Creswell, S80 4AF**

**FOR ALL YOUR AUTOMOTIVE NEEDS**

**Friendly and Reliable**

**SERVICING—MOT REPAIRS**

**CLUTCHES—TIMING BELTS—CODE READING**

**TYRES—BRAKES**

**afservicing@aol.com**

**01909 723761**



St Mary Magdalene Church  
Creswell



**Service Times:**

**2<sup>nd</sup> and 4<sup>th</sup> Sunday each  
month at 8.30am.**

**1<sup>st</sup> and 3<sup>rd</sup> Sunday at 10.30am**

**2<sup>nd</sup> and 4<sup>th</sup> Wednesday of  
each month at 9.30am**

# TAKE 2 UNISEX HAIR SALON



*Friendly Atmosphere  
all welcome*

Duke Street,  
Creswell

Tel. 01909 721755

**CLOSED MONDAYS**

## **The Black Diamond**

Karen and Richard welcome new and old customers  
into the newly refurbished Black Diamond.

**Cask ales, Sky & BT Sports,  
Community events!**

Available for Christenings, weddings, funerals etc.  
Competitive rates for catering and disco.

*Raising the community spirit by supporting  
local people through sport and Charities.*

Tel: 01909 808545



Facebook: The Black Diamond in Creswell

# MIDLAND GARAGE

Sheffield Rd. Creswell, S80 4HG

Tel: 01909 721214

Affordable rates & friendly service

Call today for prices & to book

Midland Garage is a well established garage that has built up an enviable reputation. We pride ourselves on our commitment to provide a professional and speedy service at all times, whilst maintaining the highest quality of work.

brakes & clutches

car air conditioning serviced

car batteries 3year warranty

All electrical systems tested & repaired

car engine tuning & conversion

engine diagnostics

mot testing with free retest

steering adjustment

tyre repairs

vehicle tracking

wheel balancing

Suspension repairs

brake discs skimmed in situ

car alarm fitting

car brakes specialist

car servicing

car puncture repairs

exhaust systems

oil change

tyre fitting

vehicle inspection

wheel alignment

wheel repairs

No job to big or too small

Free estimates

# Turner & Wilson

*of Whitwell Ltd*

**Independent Funeral Directors**

**Tel: 01909 720543**

**01909 721494**

**Our professional family business  
is here to help in your time of need**

- Pre-paid Funeral Arrangements available
- Established since 1970
- Private Chapel of Rest
- 24 hr Service
- Covering Worksop and Surrounding Areas

**94 Welbeck Street, Whitwell S80 4TP**

[enquiries@turnerandwilsonfunerals.co.uk](mailto:enquiries@turnerandwilsonfunerals.co.uk)

[www.turnerandwilsonfunerals.co.uk](http://www.turnerandwilsonfunerals.co.uk)



Golden  
Charter  
Funeral  
Plans 



**UK Small Business  
Funeral Planner of the Year 2015**

# St Mary Magdalene Church Creswell

**Wednesday Coffee**

**Mornings**

**10.00am - 11.00am**



**Come and meet old  
friends,  
and make new ones!**

**On the  
2<sup>nd</sup> and 4<sup>th</sup> Wednesdays  
of each month**

**(all proceeds to church funds)**

