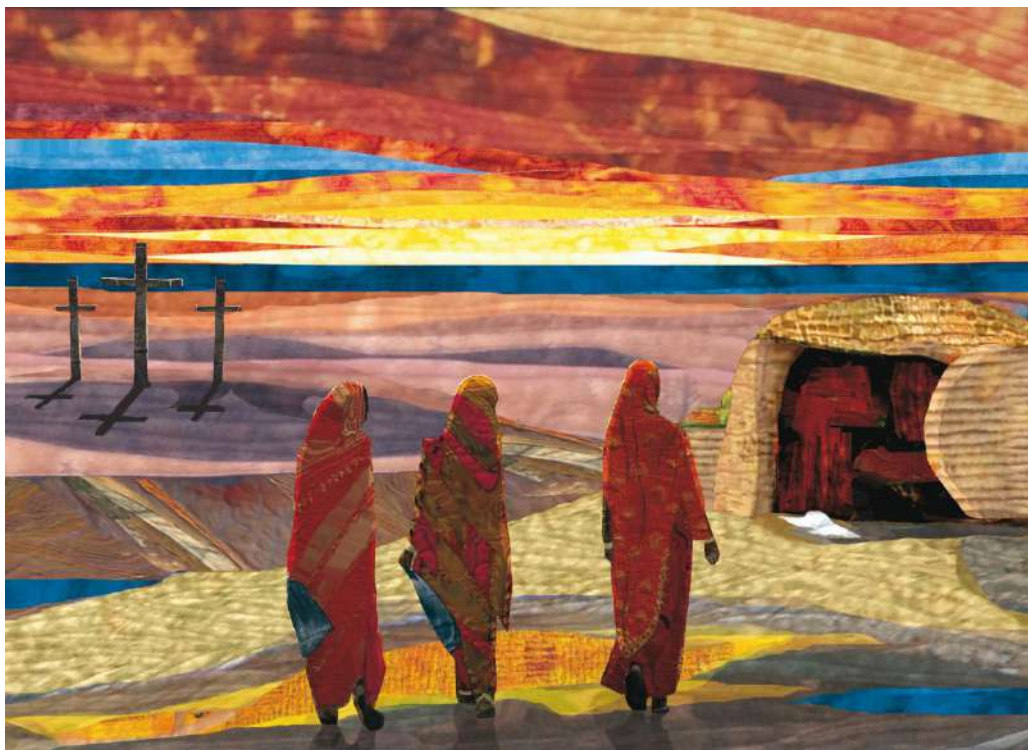


# ELMTON WITH CRESWELL



*The Stone Rolled Away © Mike Torevell*

## PARISH MAGAZINE

### **March 2018**

£1.00

# J. CLAY of Creswell

FUNERAL DIRECTORS EST. 1950

A Professional, Personal Service  
to the Bereaved

*New Private Chapel of Rest*



110 Elmton Road, Creswell  
Tel: 01909 721320



ELMTON  
with  
CRESWELL

**THE BISHOP OF DERBY**

Rt. Revd Dr Alastair Redfern  
The Bishop's House, 6 King Street,  
Duffield, Belper, DE56 4EU  
Tel. 01332 840132

**THE ARCHDEACON OF CHESTERFIELD**

The Revd. Canon Tony Kaunhoven  
Tony.kaunhoven@derby.anglican.org  
Tel. 01629 814462

**PARISH DIRECTORY**

**VICAR:** Revd. Liz Kirby (REST DAY: Thursday)  
The New Rectory, 31 High Street, Whitwell, S80 4RE  
Tel: 01909 722378 E.mail: liz.kirby@btinternet.com

**LAY READER:** Mrs Lynne Parker Tel: 01909 530994

**WARDEN**

ST. PETER'S ELMTON Mr Richard Shacklock — 01909 721235  
ST. MARY MAGDALENE'S Mr Dennis Smedley — 01909 721481  
CRESWELL:

**Deputy Warden** Mr Lewis Marriott — 01909 721564 - Creswell  
Mr Kevin Jones - Elmton

Parish Safeguarding Link(PSL): Mrs. Margaret Froggett –  
01909 723342

Church website address ecwst.com

Magazine Editor John Kirby : email: kirby486@btinternet.com

**BOOKINGS FOR WEDDINGS & BAPTISMS**



If you would like to book a Wedding or Baptism at either Elmton or Creswell church; please come along to: St. Mary Magdalene's Church, Creswell between 6 –7 pm on the 1st Thursday of the month: (Contact David Froggatt on 01909 723342)

**Baptisms take place on the 3<sup>rd</sup> Sunday  
of each month at 12.00 noon.**

Many people book baptisms well in advance and dates do get booked up particularly in the Summer months, so please don't arrange a Christening party before you have checked with us first.



## God So Loved the World

### **Editor's note**

*As Rev. Liz has been away on retreat, her assistant introduced in last month's magazine (Rev. Finn Kirby) has provided this month's letter, assisted by the contributors to the Parish Pump website!!*

For God so loved the world that He gave His one and only Son, that whoever believes in Him shall not perish but have eternal life.' (John 3:16)

This verse has been described as 'the greatest verse in the Bible', as it enables us to understand the events of Good Friday and Easter Day. The cross and resurrection reveal the depth of God's love for each of us.

God's love is unconditional: God demonstrated the extent of his love by sending His Son into this world, to show us what it looks like: 'God with skin on!' God graciously loves us, as none of us deserves it. 'There is nothing we can do to make God love us more. There is nothing we can do to make God love us less.' (Philip Yancey).

God's love is sacrificial: The cross is the supreme demonstration of God's love, as Jesus identifies with a fallen, suffering world. He died for our sins, removing the barrier between us and God, giving access into God's presence and release from the power of sin and death.

God's love is accessible: Jesus' resurrection makes His eternal life available to all who put their trust in Him. It's an offer of life with purpose, in which we can know God personally, both now and for eternity.

Bobby Moore described receiving the World Cup from the Queen in 1966 as terrifying: 'I noticed that the Queen was wearing some beautiful white gloves. I looked down at my hands and they were completely covered with mud!' Although we approach God with dirty and spoilt lives, by the cross and resurrection, we can shake hands with a holy God. He offers us 'life in all its fullness', with healing, forgiveness, peace and a fresh start in life.

with love and blessings.

Rev. Finn Kirby



## FROM THE REGISTERS FOR February.

**Baptisms:** Pippa Isabel Lilily Nelson.

**Weddings** None.

**Funerals:** Eileen Stubbins, Jennie Sullivan, Leslie Sylvia Oldham, Patricia Ann Holmes.

## SUNDAY READINGS FOR MARCH

### Sunday 4<sup>th</sup>

1 <sup>st</sup> Reading:	Exod.	20.	1 - 17.
2 <sup>nd</sup> Reading:	1 Cor.	1.	18 - 25.
Gospel Reading :	John.	2.	13 - 22..

### Sunday 11<sup>th</sup>

1 <sup>st</sup> Reading:	Num.	21.	4 - 9
2 <sup>nd</sup> Reading:	Eph.	2.	1 - 10.
Gospel Reading:	John.	3.	14 - 21.

### Sunday 18<sup>th</sup>

1 <sup>st</sup> Reading:	Jer.	31.	31 - 34.
2 <sup>nd</sup> Reading:	Heb.	5.	5 - 10.
Gospel Reading:	John.	12.	20 - 33.

### Sunday 25<sup>th</sup> Palm Sunday

Gospel Reading:	Mark.	15.	1 - 39.
-----------------	-------	-----	---------



## **SERVICES FOR March**

### **Friday 2<sup>nd</sup>**

Silent Prayer at All Saints, Steetley 1.00pm

### **Sunday 4<sup>th</sup>**

Holy Communion : St. Lawrence Whitwell 8.30 am  
Holy Communion : St. Mary Magdalene Creswell 10.30 am  
Sunday School : St. Mary Magdalene Creswell 10.30 am  
Eucharist : St. Peter's Elmton - 6.00 pm

### **Wednesday 7<sup>th</sup>**

Holy Communion : St. Lawrence Whitwell 9.30am

### **Sunday 11<sup>th</sup>**

Holy Communion : St. Mary Magdalene Creswell 8.30 am  
Holy Communion : St. Lawrence Whitwell 10.30 am  
Eucharist : All Saints Steetley 3.15 pm  
Eucharist : St. Peter's Elmton - 6.00 pm

### **Wednesday 14<sup>th</sup>**

Holy Communion : St. Mary Magdalene Creswell 9.30 am

### **Sunday 18<sup>th</sup>**

Holy Communion : St. Lawrence Whitwell 8.30 am  
Holy Communion : St. Mary Magdalene Creswell 10.30 am  
Eucharist : St. Peter's Elmton - 6.00 pm

### **Wednesday 21<sup>st</sup>**

Holy Communion : St. Lawrence Whitwell 9.30 am

### **Sunday 25<sup>th</sup>**

Holy Communion : St. Mary Magdalene Creswell 8.30 am  
Holy Communion : St. Lawrence Whitwell 10.30 am  
Eucharist : St. Peter's Elmton - 6.00 pm

### **Monday 26<sup>th</sup>**

Morning Prayer : St. Peter's Elmton 9.00am  
Compline : St. Lawrence Whitwell 8.00pm

## Tuesday 27<sup>th</sup>

Morning Prayer : St. Lawrence Whitwell 9.00am  
Compline : St. Mary Magdalene Creswell 8.00pm

## Wednesday 28<sup>th</sup>

Morning Prayer : St. Mary Magdalene Creswell 9.30 am  
Compline : St. Peter's Elmton 8.00pm

## Thursday 29<sup>th</sup>

Holy Communion and foot washing : St. Lawrence Whitwell 7.30pm  
Vigil 8.30pm to 11.30pm



---

## St Mary Magdalene 200 Club

This Month the 200 Club **Celebrates TWENTY Years** and it is still profitable. The Weekly cash prizes is First Prize £30, .The Second Prize is £20.The Third Prize has remained at £10,(Still maintaining £60 weekly Prize money) the Two Special Cash Draws At Christmas and the Annual Garden Fete will remain.(2 x £175) £350.00

We still have free numbers – don't miss out

Thank you Supporting your Church it is a beautiful building and your contribution does help to keep it maintained, **It costs in Excess of £3.000 a month to maintain the Church this is raised by the various activities we Run, Please come and Join us**

Please contact one of our collectors for Information on Joining Michele Ellis, Pauline Orwin, Helle Woodcock Marlene Frost Dennis Smedley, Janet Staniforth, Maureen Deakin  
And of course Lewis.

Everyone is Welcome Why not join up.

On Behalf of the P.C.C. - Lewis

# CRESWELL SUNDAY SCHOOL

The first Sunday of every month

at 10.30am in CRESWELL CHURCH

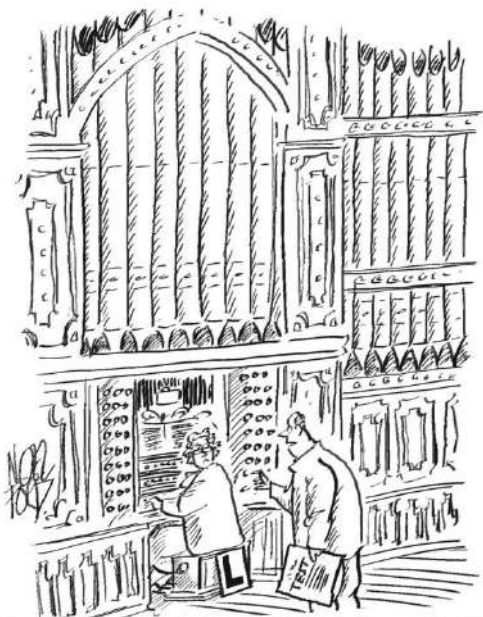
(3<sup>rd</sup> Sunday Family Service in Church)



**Why not come and join us as we  
learn about the Christian Faith  
through stories, games  
and crafts.**

**For more information contact  
Margaret Froggatt  
01909 723342**

---



"At some point between Verses 3 and 6, I'll  
signal for you to do an Emergency-Stop."



## NEWS AND FUTURE EVENTS

### TOTS AND TOAST



*For parents and pre- school children.*

*Tea, coffee and toast and a play area with toys  
for the children.*

*9.30 am – 11.00am every alternate Friday March 2<sup>nd</sup>. ...*

*.....*



### **Saturday 17<sup>th</sup> March**



Messy Church at St Mary  
Magdalene in Creswell

11.00am 'till 12.30pm

Craft Activities, food and worship – fun for the whole  
family

### **Limestone House**

Ever thought of learning to play a musical instrument:

Music lessons take place at Limestone House on  
Saturday and Sunday mornings .. .....on drum kit, guitar,  
keyboard (on Saturday morning), cornet and other brass  
band instruments ..... for children or adults, for learners  
or anyone playing an instrument who wants to improve.

Call in or phone Limestone House for details and to book  
a place.

## GOOD NEWS FOR ELMTON -

### **Press Release**

### **Elmton is the smallest village in 'Britain in Bloom 2018' finals**

Elmton, a tiny village in Derbyshire has been selected as one of only seventy six communities in the UK for this prestigious competition.

As winner of the 'Best Small Village in the East Midlands' for the past three years, Elmton is by far the smallest settlement in a competition that includes much larger villages, towns and cities.

With only forty-five properties and an electoral population of only sixty-four Elmtonians consider it a great honour to have been selected.

Elmton was originally an Anglo-Saxon village and is recorded in the Domesday book of 1086. At that time it was named Helmetune after the elm trees that were once a major feature.

It is a small village steeped in history. Archeological excavations have shown evidence of human occupation within the village boundaries since prehistoric times.

Elmton residents are delighted to have been selected for this prestigious competition and look forward to competing with the likes of Clovelly, Aberdeen, Truro and Ballymena.

Elmton was first entered into the regional competition, East Midlands in Bloom in 2005. Between 2006 and the present day the points score has gradually risen and the bronze award has been converted into silver and finally silver gilt. The aim of residents in the village is to ultimately receive the cherished gold. Elmton has been the EMIB winner in the 'small village category' five times.

- Elmton is nominated as an RHS Britain-in-Bloom finalist – a nationwide campaign intended to encourage

and celebrate the positive impact of gardening in the communities.

- Elmton is one of 76 groups from across the UK competing across 12 categories.

Contact details:

Barry Davies – Chair, Elmton Community Association

---

### *THE ELMTON FESTIVAL –*

*Well Dressing, Open Gardens and cream teas will be in June over the weekend of June 30<sup>th</sup> and 31<sup>st</sup>.*

*On Friday 29<sup>th</sup> at 6pm. There will be the service taking in all the well dressings around the village.*

---



*Front cover picture reproduced with the permission of the artist Mike Torevell.*

*If you would like to see more of his work do visit his web site:*

[www.miketorevelldesigns.blogspot.co.uk/](http://www.miketorevelldesigns.blogspot.co.uk/)

---



*It is with sadness that after nearly 106 years (the 106<sup>th</sup> anniversary would have been on the 26<sup>th</sup> March) the Creswel*

*Branch is closing. Rita Turner the leader since 2012, made this decision with great sadness. With a dwindling membership it was no longer viable to keep going.*

*Rita would like to thank Gwen for her work as secretary and to all the members for their support over the years.*

*If there is anyone who would like to start up again, Rita would like to hear from you.*

*Thank you to Rita for all your work as leader, Gwen as Secretary and the members and supporters. We wish you all well, God bless you.*

---

## LOCAL HISTORY CORNER



### **CRESWELL PARISH COUNCIL NOVEMBER 1917**

Problems in the village and those caused by the on going war were of concern to the Parish Council at this time.

Condolences were sent to the families of the latest casualties- Privates Percy Nash, J.Wheatley ,C.Pope and Corporal C.H.Goodwin.

The Red Cross Ladies and the Pals Association were asked to provide Christmas boxes, usually 15s, to all serving Creswell men whether they had worked at the Colliery or elsewhere .

At this time men in a certain age range had to enlist in the forces but exemptions could be made in special

circumstances. Three Creswell men sought exemption and had to report to the Recruiting Tribunal in Clowne.

One was John Binge aged 35years,married with 2children.He was the assistant postmaster in Creswell and stated that he did not think his father(the postmaster) could do the work himself. They had £800 passing through the office and had 400 soldiers dependents to pay. His father had undergone two operations and his nerves were shattered. The Council supported his application as he was doing work of national importance.

A 40 year old Assurance Agent was also given conditional exemption as he had a widowed mother and he had 1,000 insured persons and 300 State members on his books.

A Creswell Hairdresser aged 29, married with 3 children and health rated C2 was also lucky.(Could this be Mr.Parkes who had a shop opposite the schools?).

At home the war was having an effect in other ways. The street lamps had to be shaded according to regulations. Two people had been fined on frivolous pretexts it was reported. One man had gone into his bedroom with a lighted candle to fetch his watch and was summoned. Another switched on a bedroom light before lowering the blinds. The Council decided

that only during an air raid should these regulations be enforced.

The Ministry of Munitions wouldn't grant a licence for the purchase of copper for equipping the local fire brigade but allowed them to buy lengths of hose.

Gardeners were able to rent acre plots of land on Skinner Street at this time. Unfortunately the night soil man(a Mr.Booker)was taking his loads and dumping them on the allotments without permission! One tenant reported that he had seen a man with a gun on the land and wondered if a game keeper had been deployed.The said gunman was then warned to stay on his own garden and keep the gun at home.A lease was signed by the Council and the Duke of Portland for another 12years of the Athletic Gardens(the land between Baker Street and the shops on Elmton Road?) and also the Duke Street allotments.

A complaint was made to the District Council about a hedge on the corner of Sheffield Road and Elmton Road. It had been cut but the Parish Council thought it was still dangerous and wanted a piece taken off the corner. It seems they had their way because the triangular piece now adorned with flower beds and the winding wheel must be the result.

**Elmton***with***Creswell**  
LOCAL HISTORY GROUP

---

## Crossword Clues

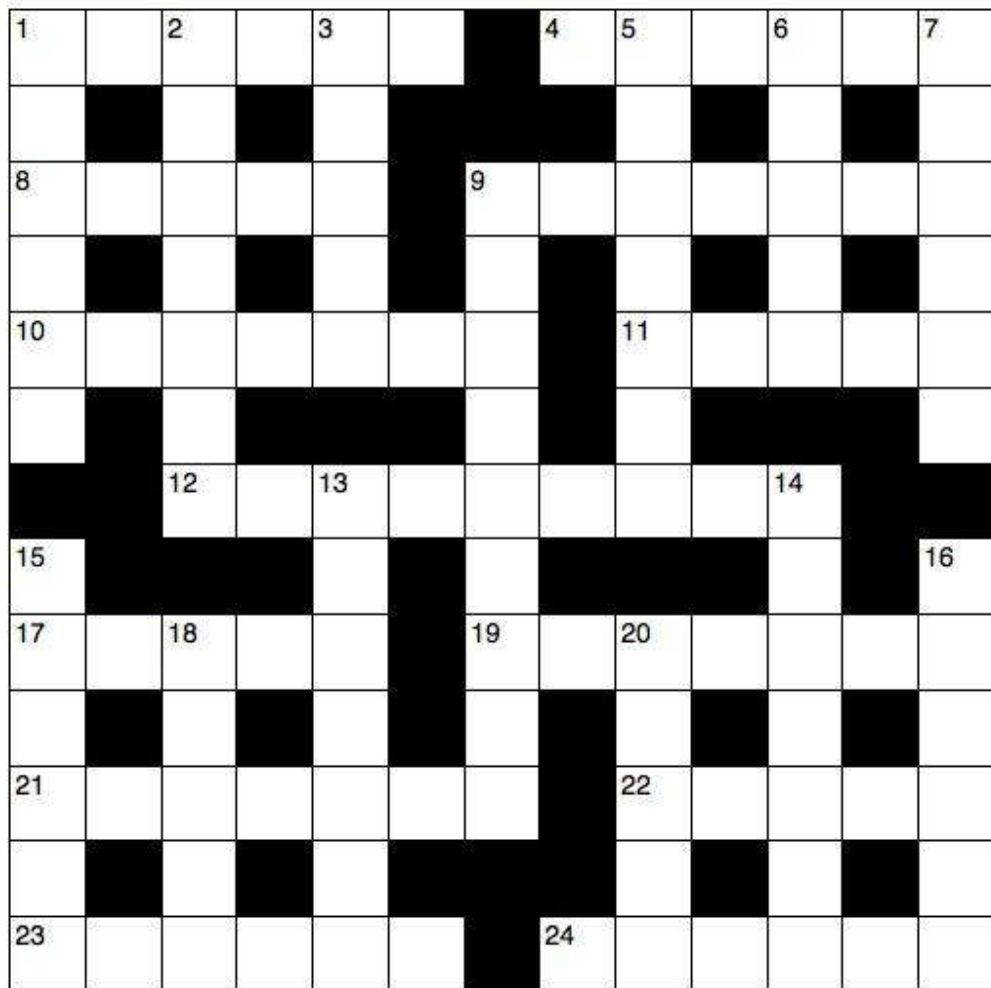
### Across

- 1 Arouse (Song of Songs 2:7) (6)
- 4 Extinguish (Isaiah 1:31) (6)
- 8 "They — —," you will say, "but I'm not hurt!" (Proverbs 23:35) (3,2)
- 9 Unhappiness (Nehemiah 2:2) (7)
- 10 Jewish (7)
- 11 Dirge (anag.) (5)
- 12 'A truthful witness gives honest — , but a false witness tells lies' (Proverbs 12:17) (9)
- 17 Paul quoted from the second one in his address in the synagogue at Pisidian Antioch (Acts 13:33) (5)
- 19 'Do not use your freedom to — the sinful nature' (Galatians 5:13) (7)
- 21 'As you can see, he has done nothing to — death' (Luke 23:15) (7)
- 22 Name applied by Isaiah to Jerusalem (Isaiah 29:1) (5)
- 23 'All the people — — one man, saying, "None of us will go home"' (Judges 20:8) (4,2)
- 24 Lazarus, who was carried by angels to Abraham's side when he died, was one (Luke 16:20) (6)

### Down

- 1 Appalled (Job 26:11) (6)
- 2 'In an — to escape from the ship, the sailors let the lifeboat down into the sea' (Acts 27:30) (7)
- 3 Expel (Acts 18:16) (5)
- 5 'But I have a baptism to — , and how distressed I am until it is completed!' (Luke 12:50) (7)
- 6 'Of the increase of his government and peace there will be — — ' (Isaiah 9:7) (2,3)
- 7 Hurry (Psalm 119:60) (6)
- 9 'For I desire mercy, not — , and acknowledgement of God rather than burnt offerings' (Hosea 6:6) (9)
- 13 One of its towns was Sychar, where Jesus met a woman at Jacob's well (John 4:5) (7)
- 14 Shouting (Acts 7:57) (7)
- 15 Arachnid (Isaiah 59:5) (6)
- 16 One of Paul's first converts in Philippi was Lydia, a — in purple cloth (Acts 16:14) (6)
- 18 Donkeys (5)
- 20 Raked (anag.) (5)

*Crossword answers page:17.*



# Sudoku

				9		5		4
	1	2		8		6		
								9
8		6			2		4	
	4		3			7		8
5								
		8		7		3	2	
6		3		5				

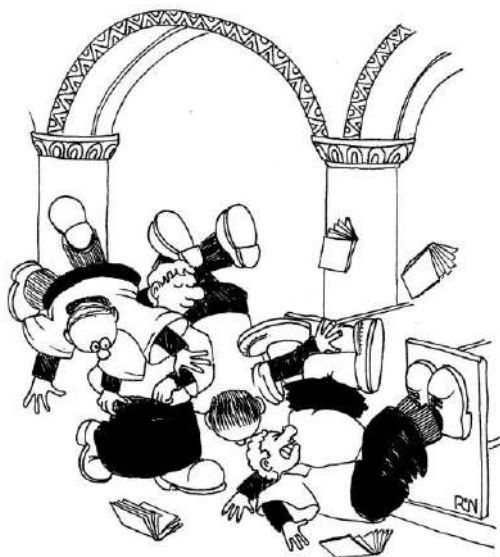
© 2008 KrazyDad.com

*Answer on page 17*



A	W	A	K	E	N	Q	U	E	N	C	H
G	T	J				N	O				A
H	I	T	M	E	S	A	D	N	E	S	S
A	E	C	A	E	N						T
S	E	M	I	T	I	C	R	I	D	G	E
T	P				R	G					N
S											
P	S	A	L	M	I	N	D	U	L	G	E
I	S	A			C	R	L				A
D	E	S	E	R	V	E	A	R	I	E	L
E	E	I					K	N			E
R	O	S	E	A	S	B	E	G	G	A	R

3	6	7	2	9	1	5	8	4
9	1	2	5	8	4	6	3	7
4	8	5	6	3	7	2	1	9
8	5	6	7	1	2	9	4	3
7	3	9	8	4	5	1	6	2
2	4	1	3	6	9	7	5	8
5	7	4	1	2	3	8	9	6
1	9	8	4	7	6	3	2	5
6	2	3	9	5	8	4	7	1



*Barry's genuflexion caught everyone  
by surprise*

## **Recipe of the Month**



### **COURGETTE SOUP**



shutterstock - 408780724

### **Ingredients**

- tbsp olive oil, plus extra to serve
- 1 brown onion, finely sliced
- 1 tsp. Swiss Vegetable Bouillon Powder
- 6 courgettes, sliced
- 2 clove garlic cloves, crushed
- Salt & Pepper
- $\frac{3}{4}$  litre water
- 1 tbsp chopped mint plus a few leaves to garnish

Creme fraiche, to garnish (optional)

### **Method**

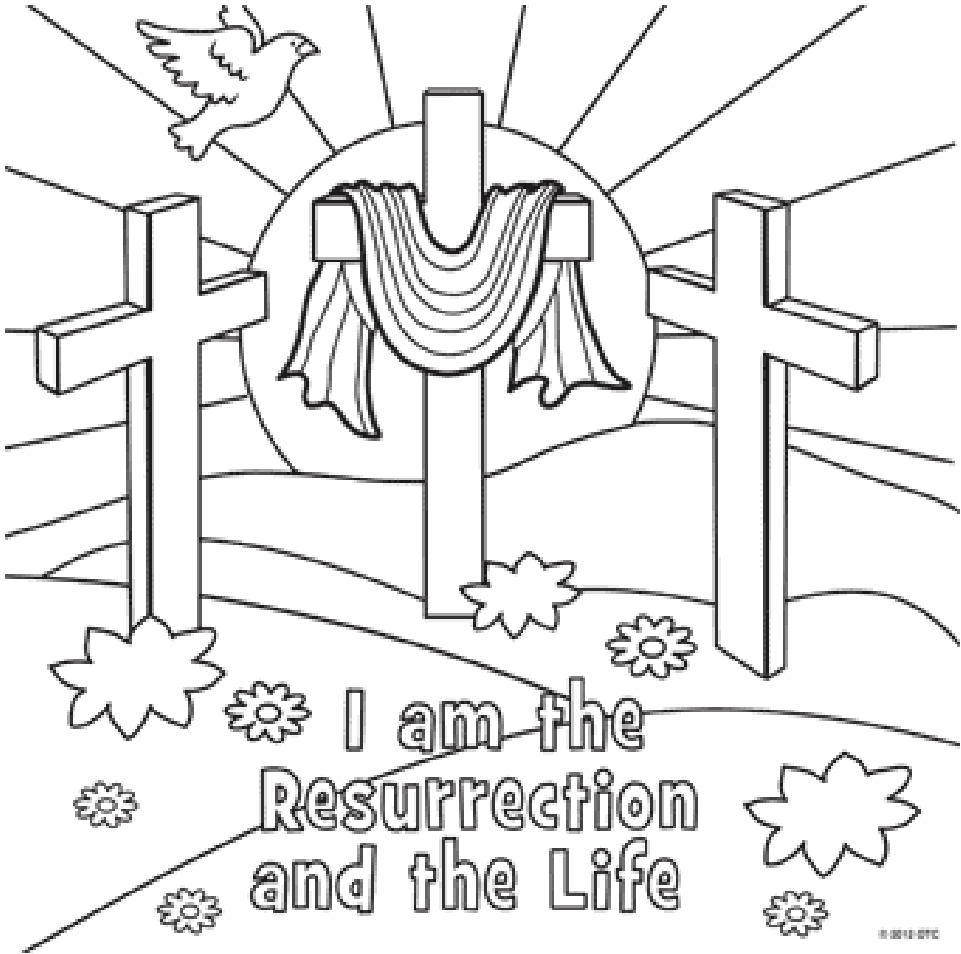
1. Gently heat the olive oil in a large pan and cook the onion for a couple of minutes. Add bouillon powder leave for further minute before adding the courgette and crushed garlic clove, season and cook for another couple of minutes stirring frequently.
  2. Add the water, increase the heat slightly and simmer for 8-10 minutes until the vegetables have softened.
  3. Remove from the heat and stir in the mint.
  4. Blend, adding extra water if required. Season to taste
  5. and serve with a drizzle of olive oil.
-

## **Events from the past that occurred during the month of March.**

- 1<sup>st</sup> Putney Bridge station on London underground opens 1880
- 2<sup>nd</sup> 86th Academy awards ceremony held in Hollywood 2014
- 3<sup>rd</sup> Former Labour leader Michael Foot dies (96) 2010
- 4<sup>th</sup> Scot's footballer Kenny Dalglish born Glasgow (66) 1951
- 5<sup>th</sup> Joseph Stalin former Russian premier dies (55) 1953
- 7<sup>th</sup> Dean Martin's "Memories are made of this" at no1 1956
- 9<sup>th</sup> Ronnie Kray shoots & kills James Cornell in Blind Beggar pub 1966
- 10<sup>th</sup> Film "Get Carter" starring Michael Caine released 1971
- 12<sup>th</sup> Paul McCartney weds Linda Eastman in London 1969
- 11<sup>th</sup> Norwich City 1-3 Sheffield Wednesday 5th round FA cup 1967
- 15<sup>th</sup> Julius Caesar Roman Emperor stabbed to death (55) 44BC
- 17<sup>th</sup> Comedian Rory Mcgrath born (61) 1956
- 19<sup>th</sup> Princess Margaret divorces Lord Snowdon after 16yrs 1976
- 20<sup>th</sup> HMHS Asturias torpedoed by German U boat kills 31 1917
- 21<sup>st</sup> "OXO" 8/1 ridden by Michael Scudamore wins Grand National 1959
- 24<sup>th</sup> England 2 -1 Finland FIFA world cup qualifier 2001
- 25<sup>th</sup> TV'S " Open all hours first aired on BBC 1973
- 26<sup>th</sup> DR Who returns to the air after 16yr absence 2005
- 27<sup>th</sup> William Henry Cavendish 4th Duke Of Portland dies (85) 1854
- 31<sup>st</sup> Eiffel Tower in Paris is opened 1889

*Sent in by Kevin Jones..*

COLOURING IN PAGE



ELMTON  
SCHOOL ROOMS  
FOR HIRE



£6.00 per hour  
(a nominal charge for heating  
may be made in winter)  
Contact: Richard

CRESWELL  
CHURCH HALL  
FOR HIRE



£8.00 per hour  
Contact:  
01909 724442



**Independent  
Testing  
Company**

26 Elmton Road  
Creswell  
Worksop  
Notts. S80 4ES

Tel. 01909 723 931

**ELECTRICAL CONTRACTORS  
TEST & INSPECTION ENGINEERS  
PORTABLE APPLIANCE TESTING  
ELECTRICAL SAFETY CONSULTANTS  
FIRE ALARM & INTRUDER ALARM  
SERVICING**

**TEL: 01909 723931**

REGISTERED MEMBER



**CRESWELL  
FISH BAR**



"  
Proprietor: Andrew Sergiou

**Kebabs a speciality**

70 Elmton Road, Creswell  
Tel: 01909 721356

To advertise in our Magazine  
please contact John Kirby on:-

01909 722378 or  
[kirby486@btinternet.com](mailto:kirby486@btinternet.com).

Cost per year are:

Full page £100.00  
½ page £ 50.00  
¼ page £ 25.00  
1/6 size £ 17.00

**102 Elmton Road**

**Creswell**

**Workshop**

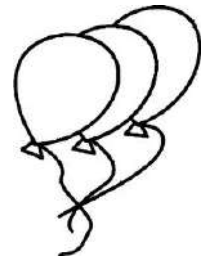
**Nott's**

**S80 4BT**

**Tel. 01909 723973**

**Proprietor: Mrs Rita Turner**

**TURNER'S**



*A family run business*

We offer a good range of Household  
Cleaning Product's, Garden Compost  
D.I.Y Equipment, Pet Food & Bedding

**We also deliver free of charge to over 60's in Creswell:  
delivery to surrounding areas will be charged at a rate  
to be arranged**

## LIMESTONE HOUSE COMMUNITY AND VISITOR CENTRE

**Open: Monday to Friday from 9am to 4.30pm and Saturday 9am to 12noon**

- **Memory Lane Café** food and refreshments at reasonable prices
- **Heritage Centre:** Mining Display by the Elmton with Creswell Local History Group and the War Years
- **2 Community Computers** with internet
- **‘Making Ends Meet/ Get your Finances in Shape’-** we can direct you to someone who can give you support
- **Intergenerational Training in basic IT /on line communications** funded by Big Local. Anyone ‘over School leaving age’ can join this training course. There is no upper age limit for this course which is on Wednesdays from 3.30p.m to 6p.m: Book in now.
- **Advisory services** every Thursday 1pm to 3.30pm in Room 6,
- **Recycling in Charity shops** (upstairs and downstairs at Limestone House)
- **Training through Volunteering or Work experience** in Retail, Office Admin and Cafe.
- **Music Club on Mondays:** music presentations 10.30 to 12 noon (Room 7/8) & **Coaching Brass Instrument players/ Drums** on Sundays 10.30 a.m to 1 p.m. **Some Brass Instruments are now available if you wish to learn (cornets, tenor horn and trombone)**
- **Luncheon Clubs on Mondays and Fridays** from 12.15p.m. Transport available.
- **Genealogy Club:** Thursday mornings 10a.m to 12noon... Research your Family Tree
- **Job Club: “Drop in”:** every Tuesday 1.30 to 3.00 p.m
- **Room Hire ideal for Breakfast meetings at £8 an hour.** Evenings Room hire is also available. Contact us to book a room
- **Connect Creswell:** Crafts and various activities, (Book in at Limestone House)
- **Fundraising activities:** 100+ Club, Raffles. Concerts with light refreshments: **Tea time Brass Band ‘Proms’ concert on Sunday, 30/10/16 in the Creswell Social Centre**
- **Book a Lunch for your Group:** One week’s notice required.
- **Christmas dinner for your Group:** book as soon as possible

[www.limestonehousecreswell.com/](http://www.limestonehousecreswell.com/) We are on Facebook/ We do have a lift

**Elmton and Creswell Village Company, Charity number: 1128286**

**E mail: creswell\_res\_point@yahoo.co.uk**

**BEECROFT  
MEMORIALS**

Sculptors Stone Mason

*Quality Carving Of All Stone,  
Marble & Granite*  
Inscriptions & renovations

**SHOWROOM**

**6A Elmton Road, Creswell**

**Mon—Fri 9.30am—5pm**

**Sat 9 am—12.30pm**

**Tel. 01909 723780**

**Mob. 07970 460193**

**Fax 01909 726602**

St Peters Church Elmton



Service times:

6.00pm every Sunday except when  
there is a 5<sup>th</sup> Sunday of month.

# ***AF SERVICING***

**Mansfield Road, Creswell, S80 4AF**

**FOR ALL YOUR AUTOMOTIVE NEEDS**

**Friendly and Reliable**

**SERVICING—MOT REPAIRS**

**CLUTCHES—TIMING BELTS—CODE READING**

**TYRES—BRAKES**

**afservicing@aol.com**

**01909 723761**



**St Mary Magdalene Church  
Creswell**



**Service Times:**

**2<sup>nd</sup> and 4<sup>th</sup> Sunday each  
month at 8.30am.**

**1<sup>st</sup> and 3<sup>rd</sup> Sunday at 10.30am**

**2<sup>nd</sup> and 4<sup>th</sup> Wednesday of  
each month at 9.30am**

**TAKE 2  
UNISEX  
HAIR SALON**



*Friendly Atmosphere  
all welcome*

**Duke Street,  
Creswell**

**Tel. 01909 721755**

**CLOSED MONDAYS**

**FAMILY RUN BUSINESS!**

**Friendly Service & Affordable Rates**



- **Pre-MOT Inspection**
- **Pre-paid repairs available – spread the cost**
- **MOT Reminder**
- **Servicing**
- **General repairs**
- **Brakes and exhausts**
- **Suspension repairs**
- **Steering**
- **Light welding repairs**
- **MOT repairs**
- **Clutch repairs**
- **Small van repair**

*We also carry out motorcycle light repairs and servicing*

**CALL TODAY ON 01909 807170**

**Email - [au7omo7ivelimited@yahoo.com](mailto:au7omo7ivelimited@yahoo.com)**

**UNIT 2 ENTERPRISE COURT | COLLIERY ROAD | CRESWELL | S80 4BX**

# MIDLAND GARAGE

Sheffield Rd. Creswell, S80 4HG

Tel: 01909 721214

Affordable rates & friendly service

Call today for prices & to book

Midland Garage is a well established garage that has built up an enviable reputation. We pride ourselves on our commitment to provide a professional and speedy service at all times, whilst maintaining the highest quality of work.

brakes & clutches

car air conditioning serviced

car batteries 3year warranty

All electrical systems tested & repaired

car engine tuning & conversion

engine diagnostics

mot testing with free retest

steering adjustment

tyre repairs

vehicle tracking

wheel balancing

Suspension repairs

brake discs skimmed in situ

car alarm fitting

car brakes specialist

car servicing

car puncture repairs

exhaust systems

oil change

tyre fitting

vehicle inspection

wheel alignment

wheel repairs

No job to big or too small

Free estimates

# Turner & Wilson

Whitwell Ltd

Independent Family  
Funeral Directors



Our professional family business is here to help in your time of need.

- Pre-paid funeral arrangements available
- Established Since 1970
- Private Chapel of Rest
- Covering Worksop & surrounding areas
- 24hr Service

---

T. 01909 720543 / 721494 • M. 07803 944299

94 Welbeck St, Whitwell, Worksop, Nottingham, S80 4TP

[enquiries@turnerandwilsonfunerals.co.uk](mailto:enquiries@turnerandwilsonfunerals.co.uk)

[www.turnerandwilsonfunerals.co.uk](http://www.turnerandwilsonfunerals.co.uk)

---



Golden Charter  
Funeral Plans 



UK's Small Business Funeral  
Planner of the year 2015

East Midlands Region Funeral  
Planner of the year 2017

# St Mary Magdalene Church Creswell

Wednesday Coffee

Mornings

10.00am - 11.00am



Come and meet old  
friends,  
and make new ones!

On the  
2<sup>nd</sup> and 4<sup>th</sup> Wednesdays  
of each month

(all proceeds to church funds)

